



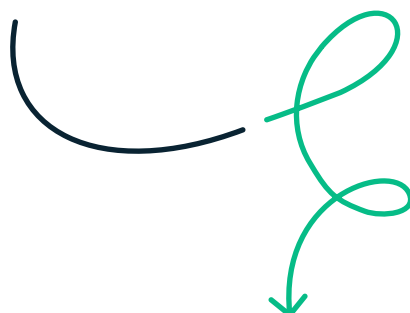




Find the right plan for your needs

Each plan includes **unlimited users**,
SKUs and **integrations**.

MOST VALUE			
			
Starter	Standard	Professional	Professional Plus
For smaller businesses that want to start with a more simple and scalable solution to manage inventory	For growing companies that have large teams, multiple warehouses, and are in need of an advanced management solution	For established businesses that need a robust solution that offers additional customization and more complex workflows	For large-scale companies that regularly experience a high volume of orders and need a priority level of support and services
\$179 per month (billed annually) \$199 billed monthly	\$359 per month (billed annually) \$399 billed monthly	\$799 per month (billed annually) \$899 billed monthly	\$1,799 per month (billed annually) \$1,999 billed monthly



	Starter	Standard	Professional	Professional Plus
Base fee / billed monthly	\$199/mo	\$399/mo	\$899/mo	\$1,999/mo
Base fee / billed annually	\$179/mo	\$359/mo	\$799/mo	\$1,799/mo
Core features				
<i>*Consumed in equal monthly bundles ** Gross merchandise value</i>				
Sales orders / year	1,200*	6,000*	18,000*	40,000*
GMV** / year	\$600,000*	\$5,000,000*	\$50,000,000*	\$150,000,000*
Users	Unlimited	Unlimited	Unlimited	Unlimited
SKUs	Unlimited	Unlimited	Unlimited	Unlimited
Integrations	Unlimited	Unlimited	Unlimited	Unlimited
Inventory locations	1	3	10	Unlimited
Order management				
Sales and purchase order control	✓	✓	✓	✓
Contact management	✓	✓	✓	✓
Landed and shipping costs	✓	✓	✓	✓
Multi-currency support		✓	✓	✓
Basic manufacturing	✓	✓	✓	✓
Advanced manufacturing + SFC app		\$199/mo	\$499/mo	\$999/mo
Inventory management				
Item management	✓	✓	✓	✓
Real-time inventory planner	✓	✓	✓	✓
Full traceability		\$199/mo	✓	✓
Warehouse management				
Bin locations		✓	✓	✓
Barcode scanning		✓	✓	✓
Other				
Insights module	Sales reports only	✓	✓	✓
PDF printouts	Default templates	Custom templates	Custom templates	Custom templates
User permissions	Default	Custom	Custom	Custom
Custom fields		✓	✓	✓
Full access to Katana's open API			✓	✓

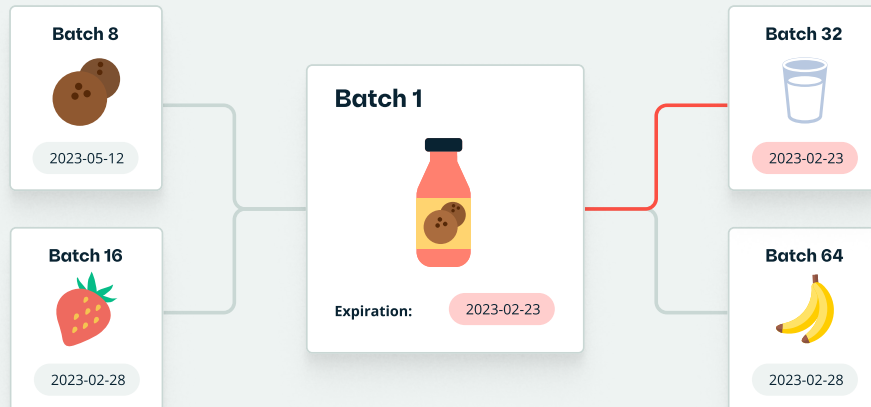
Katana add-ons

Add-ons let you customize your setup and extend the functionality of Katana in a cost-effective way.

Full traceability

\$199/mo

From the shop floor to the end customer - trace items by their serial number or in batches



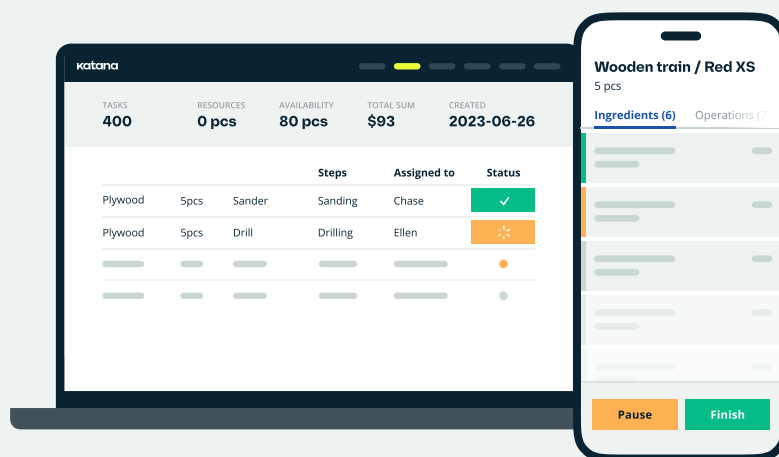
Features included

- **Serial numbers** - track your products using a unique identifier and ensure complete traceability of product history, making warranty support and any potential recalls easier.
- **Batch numbers** - assign batch/lot numbers to purchased and manufactured items and assign expiration dates to batches to gain a better understanding of your item's shelf life.

Advanced manufacturing

FROM \$199/mo

Track, schedule, and report the progress of manufacturing operations



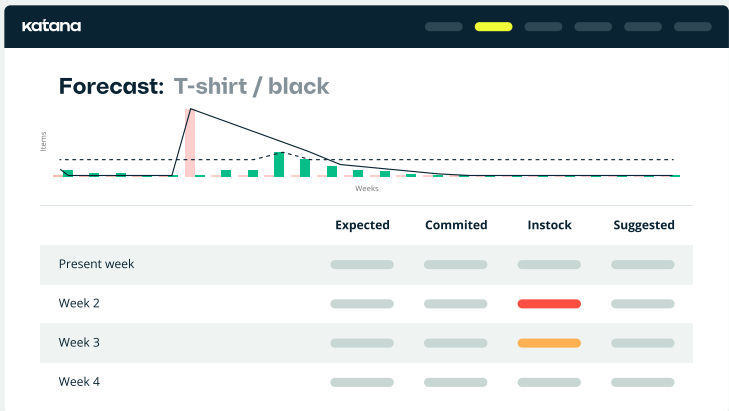
Included features

- **Track operations via the Shop Floor App** - add operators, and discover a useful breakdown of resource and material usage.
- **Manufacturing routings** - establish manufacturing sequences (consecutive or parallel) for your operations.
- **Manufacturing insights** - analyze different manufacturing costs and find a breakdown of resource and material usage.

Planning and forecasting

COMING SOON

Safeguard your cash flow while avoiding stockouts and overstocking using the real-time inventory planning and forecasting toolset



Included features

- **Demand planning** - base your decisions on real-time sales data and maintain ideal inventory levels at all times.
- **Demand forecasting** - utilize historical data to proactively order and restock items, prevent stockouts, minimize overstock, and improve your supply chain efficiency.
- **Replenishment planning** - receive calculated replenishment recommendations, set minimum order quantities, and have reorder points calculated automatically.